

Hotel EQUATOR



Single economy. Room includes fridge, TV, telephone, tea-making facilities, wardrobe, work-table, bathroom.



Single standard. Room includes fridge, satellite TV, work-table, wardrobe, tea-making facilities, telephone, bathroom with accessories.



Twin standard. Single standard includes 2 rooms, provided with fridge, satellite TV, coffee table, work-table, telephone, tea-making facilities, bathroom with accessories.



Studio (city view/sea view)

One room with king-size bed and sofa, fridge, mini-bar, satellite TV, DVD-recorder, tea-making facilities, Wi-Fi, wardrobe, coffee table, work-table. Bathroom with hydro massage, bathrobe, hairdryer, telephone and accessories.



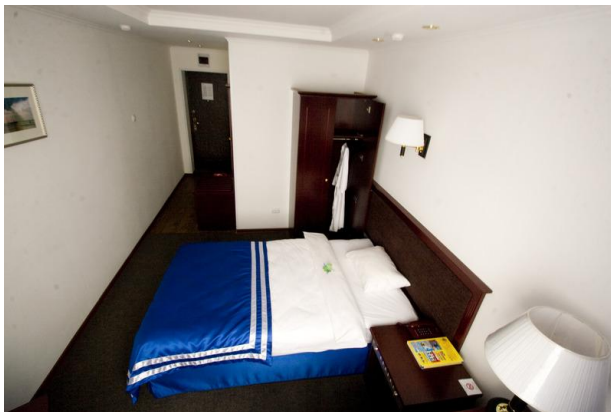
Luxe 5th floor. (city view/sea view)

Luxe includes 2 rooms (living room and bedroom) provided with sofa, fridge, TV, kitchen set (dining table, cutlery, cupboards), satellite TV, telephone, tea-making facilities. Bathroom includes accessories and bathrobe.



Luxe 9th floor. (city view/sea view)

This luxe includes 2 rooms, provided with fridge, coffee table, wardrobe, work-table, satellite TV, telephone, tea-making facilities, mini-bar, Wi-Fi. Bathroom includes accessories and bathrobe.



Single 9th floor (city view/sea view).

There are fridge, work-table, wardrobe, mini-bar, satellite TV, video tape recorder, tea-making facilities, Wi-Fi in the room. Bathroom with accessories and bathrobe.